

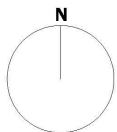
### B9-1C

#### Superficies útiles / Usable area

Dormitorio 1 / Bedroom 1	19.91 m <sup>2</sup>
Dormitorio 2 / Bedroom 2	14.08 m <sup>2</sup>
Estar-Comedor-Cocina / Living-Dining-Kitchen	36.34 m <sup>2</sup>
Baño 1 / Bathroom 1	5.45 m <sup>2</sup>
Baño 2 / Bathroom 2	4.59 m <sup>2</sup>
Paso / Hall	0.80 m <sup>2</sup>

#### Superficies construidas / Built area

Superficie cerrada/Closed built area	94.06 m <sup>2</sup>
Porche 1/Porch 1	22.33 m <sup>2</sup>
Pérgola/Pergola	7.02 m <sup>2</sup>
Azotea/Roof terrace	70.51 m <sup>2</sup>



\*Las medidas de superficie son orientativas, ver los planos originales de cada vivienda  
 \*Surface measurements are indicative, see the original plans of each apartment



Escala 1/100